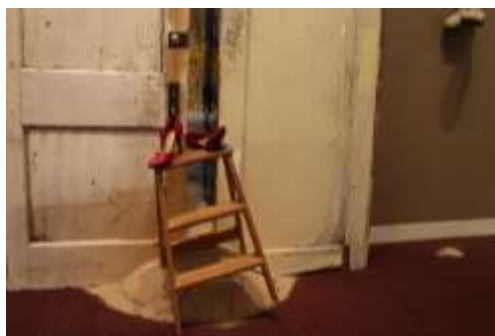


# An Unfit Effect

‡

Erica Slone (U.S. Air Force)



Mixed media installation (2010) – with two details  
From the collections of the National Veterans Art Museum, Chicago, IL  
Gallery installation photos; digital images courtesy Giuseppe Pellicano

## Description:

My art critiques national and cultural justifications of dividing people through visual testimony. In my work, I reconstruct my personal experiences as an investigation of social, political, and religious power structures. Engaging subjects such as the Iraq War, military culture, veterans' care, and gay and women's rights, my work combines both familiar visual representations and a personal vocabulary of symbols, into multi-layered pieces.

*An Unfit Effect* conflates the religion-based mentality behind the controversial issues of homosexuals serving under Don't Ask, Don't Tell, the concerns of women in combat, and the problems behind historical conflicts in the Middle East. Is religion a valid justification of these seemingly social absurdities? Do these policies have other merits? Do the severe consequences that directly affect only a few, provide reason enough to rethink how we conduct business?